

# HIDALGO COUNTY REGIONAL MOBILITY AUTHORITY

## HCRMA Board of Directors

**Robert L. Lozano - Chairman**

**Ezequiel Reyna, JR., Vice Chairman**

**Juan Carlos Del Angel, Secretary/Treasurer**

**Jose Maria “Joe” Ochoa, Director**

**Sergio Saenz, Director**

**Michael J. Williamson, Director**

**Roel “Roy” Rodriguez, P.E., Director**

## HCRMA Staff

**Pilar Rodriguez, PE, Executive Director**

**Ramon Navarro IV, PE, CFM, Chief Constr. Engineer**

**Celia Gaona, CIA, Chief Auditor/Compliance Officer**

**Jose Castillo, Chief Financial Officer**

**Ruben Alfaro, PE, CFM, Development Engineer**

**Sergio Mandujano, Constr. Records Keeper**

**Maria Alaniz, Program Coordinator**

**Ivonne Rodriguez, Program Coordinator**

## General Engineering Consultant

**HDR ENGINEERING, INC.**

**Strategic Plan Update 2025-2029  
Amendment 1**

**UPDATED  
MARCH 2025**





# HCRMA/TxDOT Strategic Interests in Hidalgo County Project

- 0010 IBTC
- 0030 365 TOLL
- 0040 Segment A West
- 0050 US 83 Relief Route
- 0060 Section C
- 0070 SH 68
- 0080 Section F
- 0090 Section E
- I-69 Connector 2
- I-69 Connector 1

SCALE: 1 inch = 4 miles

0 2.5 5 10 Miles

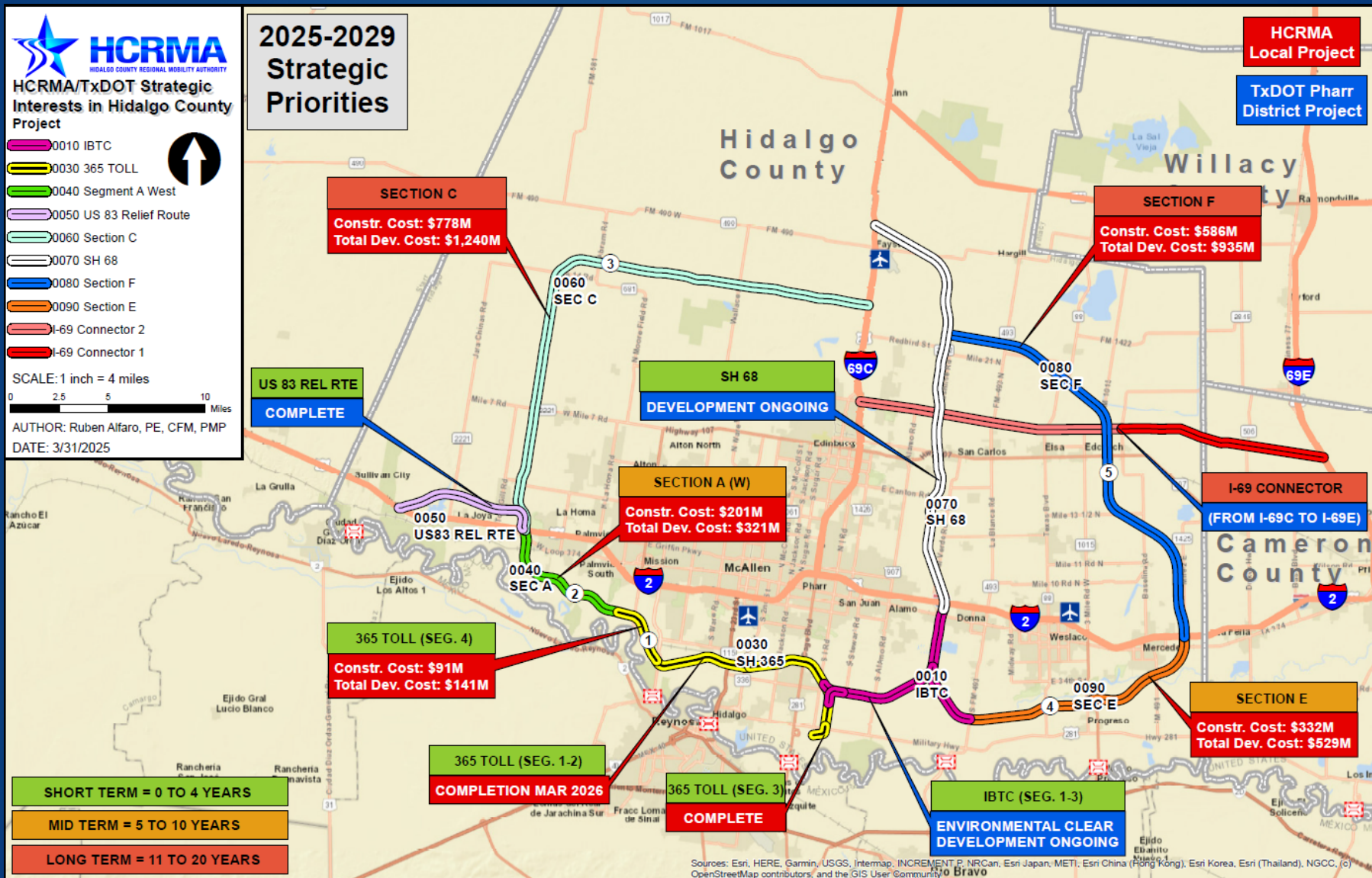
AUTHOR: Ruben Alfaro, PE, CFM, PMP

DATE: 3/31/2025

## 2025-2029 Strategic Priorities

HCRMA Local Project

TxDOT Pharr District Project





# 365 TOLL SEGMENTS 1 & 2



- ❑ Project construction completion expected March 2026.
- ❑ As of March 2024, project is 60% complete.
- ❑ Major floodway bridge and floodway levee relocation completed.



Anzalduas connector  
West end of project



FM 494 to Bentsen Rd.  
West end of project



FM 494 to Bentsen Rd.  
West end of project



## IBTC UPDATES

- ❑ Environmental Clearance achieved
- ❑ Schematic Approved
- ❑ Successfully transitioned project to TxDOT
- ❑ Fully funded for construction by TxDOT
- ❑ PS&E Contract to be executed December 2024

## I-69 CONNECTOR UPDATES

- ❑ TxDOT Public Scoping meeting tentatively scheduled for January 2025.
- ❑ TxDOT funded schematic in progress.
- ❑ TxDOT funded environmental phase in progress.

## SH 68 UPDATES

- ❑ TxDOT is in the final stages of environmental phase. Expected to be environmentally clear by summer 2025 (ROD).
- ❑ Schematic design in progress by TxDOT (95% complete).





**Project**

0030 365 TOLL

0040 Segment A West



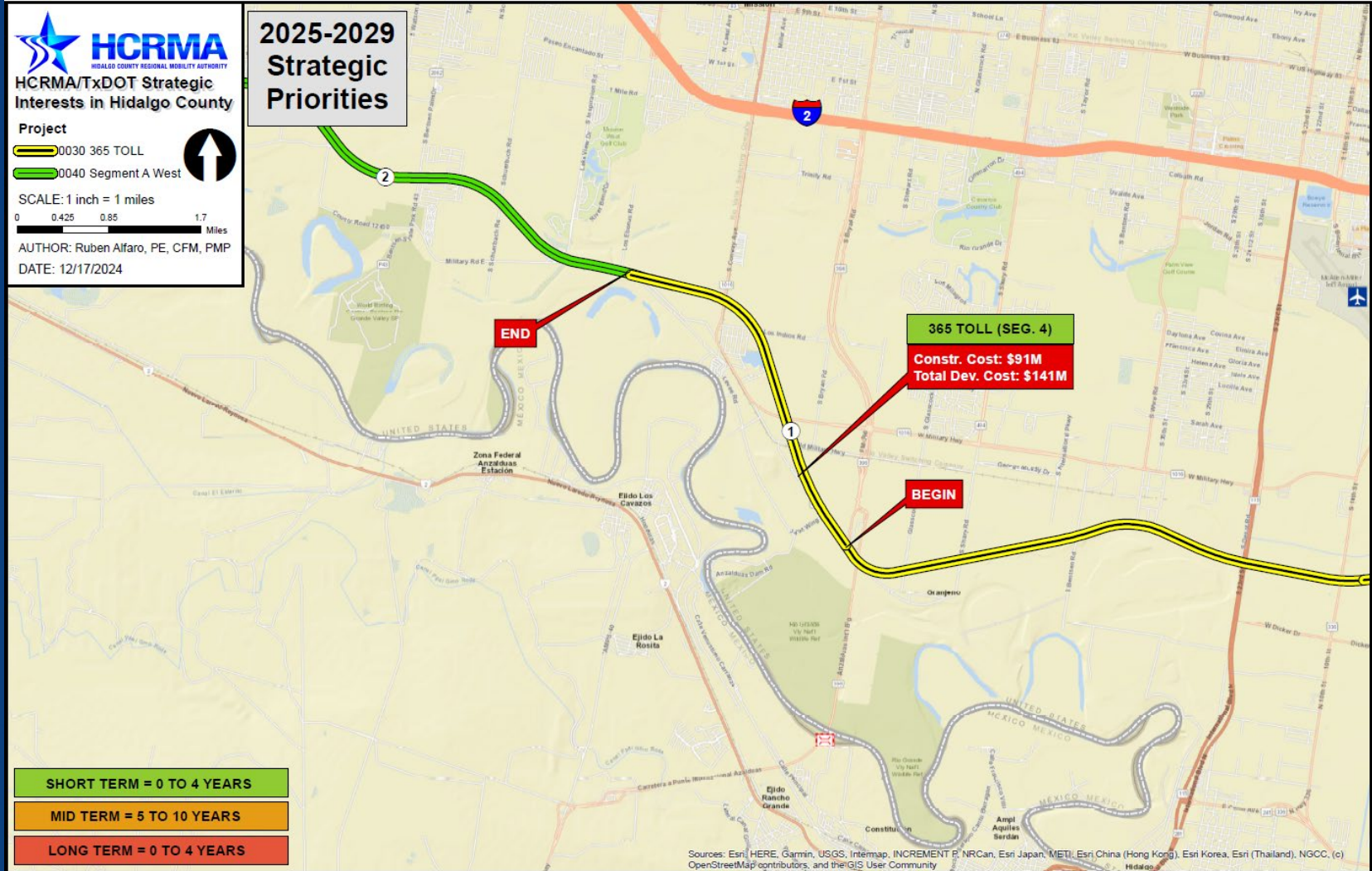
SCALE: 1 inch = 1 miles

0 0.425 0.85 1.7 Miles

AUTHOR: Ruben Alfaro, PE, CFM, PMP

DATE: 12/17/2024

**2025-2029  
Strategic  
Priorities**



# 365 TOLL SEGMENT 4



# 365 TOLL SEGMENT 4



## PROJECT LIMITS:

FROM: FM 1016/CONWAY AVE.

TO: FM 396/ANZALDUAS HIGHWAY

LENGTH: 3.47 MILES

ESTIMATED COST: \$140,681,600.00

PROPOSED LETTING DATE: FY 2029

## NEXT STEPS:

- ▶ ENVIRONMENTAL REFRESHER
- ▶ ROW ACQUISITION
- ▶ PS&E DEVELOPMENT

## CHALLENGES:

- ▶ FUNDING TBD

## COST BREAKDOWN:

MANAGEMENT SUPPORT	\$1,353,300.00
PRELIMINARY ENGINEERING	\$1,353,300.00
FINAL DESIGN	\$6,315,400.00
ROW ACQUISITION	\$25,200,000.00
UTILITY RELOCATION	\$4,511,000.00
CONSTRUCTION	\$94,731,000.00
CONSTRUCTION MANAGEMENT	\$7,217,600.00
TOTAL DEVELOPMENT COST	\$140,681,600.00

## PROPOSED FUNDING:

- ▶ TOLL REVENUE BONDS

PRIORITY

1







## HCRMA/TxDOT Strategic Interests in Hidalgo County

### Project

0030 365 TOLL

0040 Segment A West

0050 US 83 Relief Route

0060 Section C

I-69 Connector 2

I-69 Connector 1

SCALE: 1 inch = 1 miles

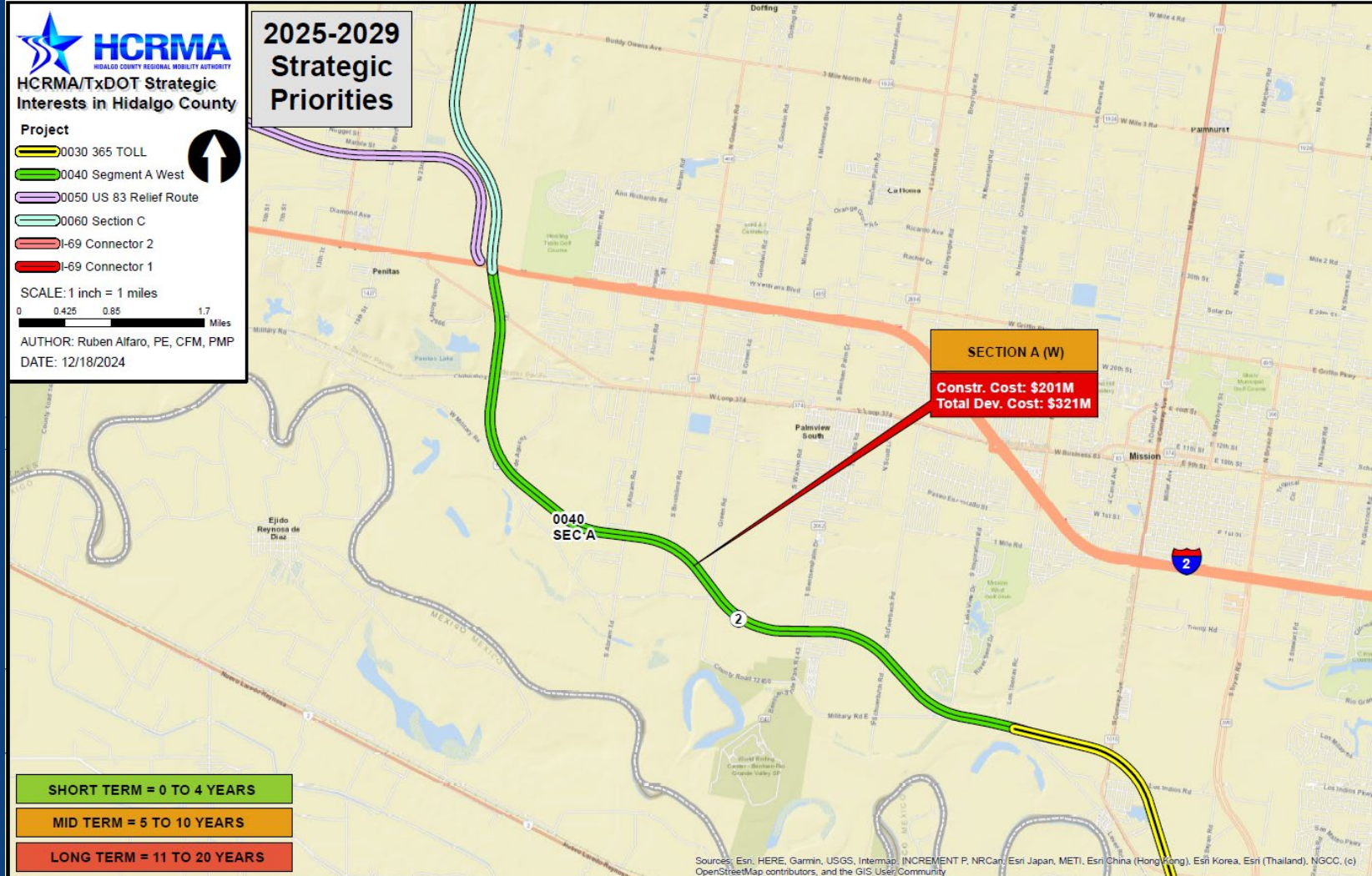
0 0.425 0.85 1.7 Miles

AUTHOR: Ruben Alfaro, PE, CFM, PMP

DATE: 12/18/2024



## 2025-2029 Strategic Priorities



# SECTION A (WEST)



# SECTION A (WEST)



## PROJECT LIMITS:

FROM: I-2, 0.8 MILES WEST OF SHOWERS RD.

TO: FM 1016/CONWAY AVE.

LENGTH: 7.73 MILES

ESTIMATED COST: \$320,538,700.00

PROPOSED LETTING DATE: FY 2033

## NEXT STEPS:

- ▶ EXECUTE ENVIRONMENTAL CLEARANCE CONTRACT AND BEGIN PROCESS
- ▶ DEFINE FINAL ROUTE AS PART OF PROCESS

## CHALLENGES:

- ▶ CURRENT ROUTE PRESENTS SEVERAL RESIDENTIAL DISPLACEMENTS
- ▶ CURRENT ROUTE TRAVERSES FEDERALLY PROTECTED LAND

## **COST BREAKDOWN:**

MANAGEMENT SUPPORT	\$3,014,700.00
PRELIMINARY ENGINEERING	\$10,049,000.00
FINAL DESIGN	\$14,068,600.00
ROW ACQUISITION	\$56,250,000.00
UTILITY RELOCATION	\$10,049,000.00
CONSTRUCTION	\$211,029,000.00
CONSTRUCTION MANAGEMENT	\$16,078,400.00
TOTAL DEVELOPMENT COST	\$320,538,700.00

## **PROPOSED FUNDING:**

- ▶ TOLL REVENUE BONDS

PRIORITY

2





# 2025-2029 Strategic Priorities

## Project

- 0040 Segment A West
- 0050 US 83 Relief Route
- 0060 Section C
- I-69 Connector 2

SCALE: 1 inch = 2 miles

0 0.75 1.5 3 Miles

AUTHOR: Ruben Alfaro, PE, CFM, PMP

DATE: 12/18/2024



## SECTION C



# SECTION C

## PROJECT LIMITS:

FROM: I-2, 0.8 MILES WEST OF SHOWERS RD.

TO: I-69C, 0.6 MILES SOUTH OF FM 162

LENGTH: 29.89 MILES

ESTIMATED COST: \$1,239,289,100.00

PROPOSED LETTING DATE: FY 2039

## NEXT STEPS:

- ▶ EXECUTE ENVIRONMENTAL CLEARANCE CONTRACT AND BEGIN PROCESS
- ▶ DEFINE FINAL ROUTE AS PART OF PROCESS

## CHALLENGES:

- ▶ TO BE DETERMINED BASED ON FINAL ROUTE

## **COST BREAKDOWN:**

MANAGEMENT SUPPORT	\$11,657,100.00
PRELIMINARY ENGINEERING	\$37,857,000.00
FINAL DESIGN	\$54,399,800.00
ROW ACQUISITION	\$217,350,000.00
UTILITY RELOCATION	\$38,857,000.00
CONSTRUCTION	\$815,997,000.00
CONSTRUCTION MANAGEMENT	\$62,171,200.00
TOTAL DEVELOPMENT COST	\$1,239,289,100.00

## **PROPOSED FUNDING:**

- ▶ TOLL REVENUE BONDS

PRIORITY

3





**Project**

- 0010 IBTC
- 0080 Section F
- 0090 Section E
- I-69 Connector 2
- I-69 Connector 1

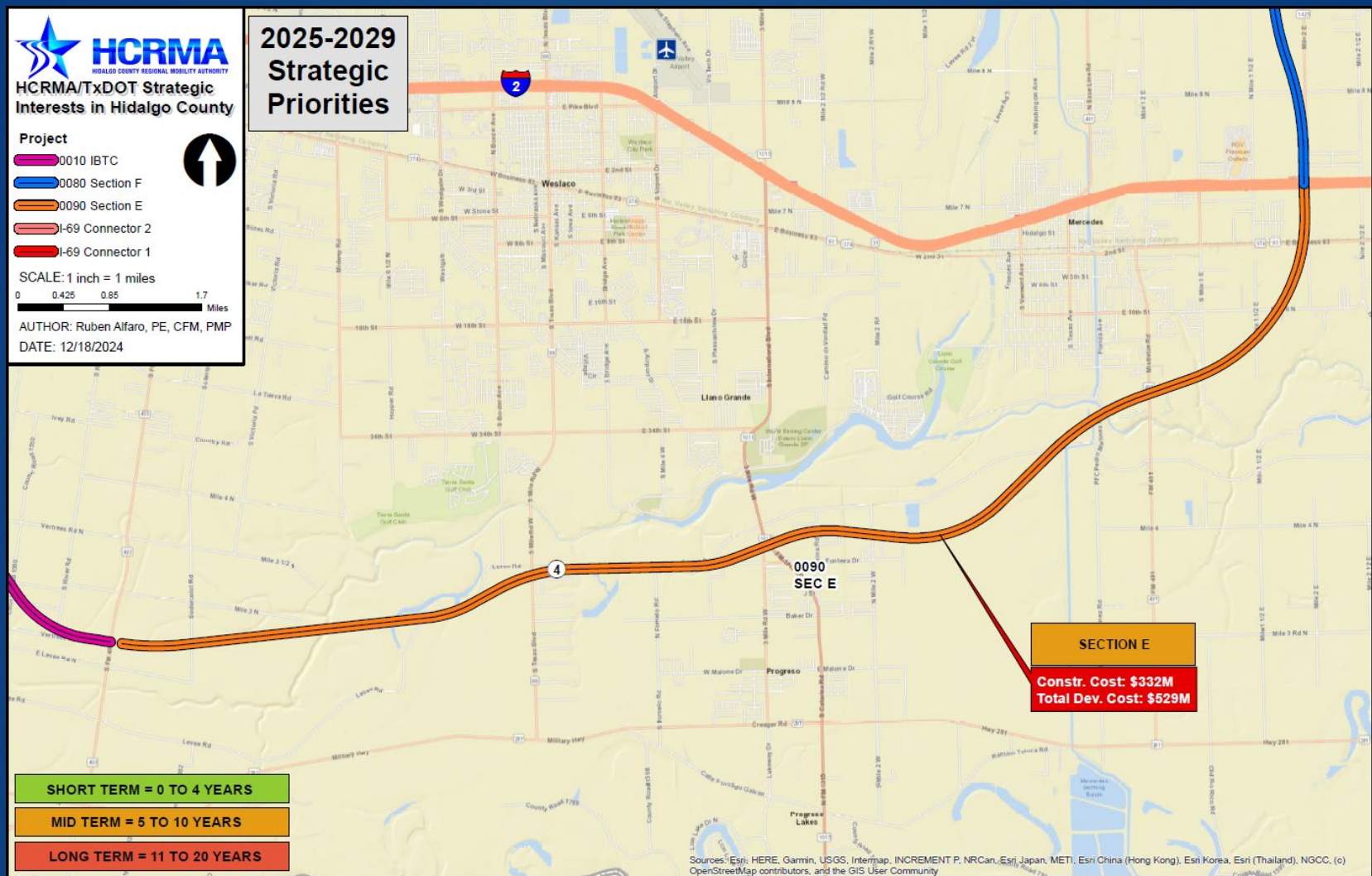
SCALE: 1 inch = 1 miles

0 0.425 0.85 1.7 Miles

AUTHOR: Ruben Alfaro, PE, CFM, PMP

DATE: 12/18/2024

## 2025-2029 Strategic Priorities



# SECTION E



# SECTION E

## PROJECT LIMITS:

FROM: IBTC, EAST CONNECTOR

TO: 1-2, ~1 MILES EAST OF MILE 1 EAST

LENGTH: 12.75 MILES

ESTIMATED COST: \$528,622,500.00

PROPOSED LETTING DATE: FY 2035

## NEXT STEPS:

- ▶ EXECUTE ENVIRONMENTAL CLEARANCE CONTRACT AND BEGIN PROCESS
- ▶ DEFINE FINAL ROUTE AS PART OF PROCESS

## CHALLENGES:

- ▶ TO BE DETERMINED BASED ON FINAL ROUTE

## **COST BREAKDOWN:**

MANAGEMENT SUPPORT	\$4,972,500.00
PRELIMINARY ENGINEERING	\$16,575,000.00
FINAL DESIGN	\$23,205,000.00
ROW ACQUISITION	\$92,700,000.00
UTILITY RELOCATION	\$16,575,000.00
CONSTRUCTION	\$348,075,000.00
CONSTRUCTION MANAGEMENT	\$26,520,000.00
TOTAL DEVELOPMENT COST	\$528,622,500.00

## **PROPOSED FUNDING:**

- ▶ TOLL REVENUE BONDS







PRIORITY

4





**Project**

-  0010 IBTC
-  0070 SH 68
-  0080 Section F
-  0090 Section E
-  I-69 Connector 2
-  I-69 Connector 1

SCALE: 1 inch = 2 miles

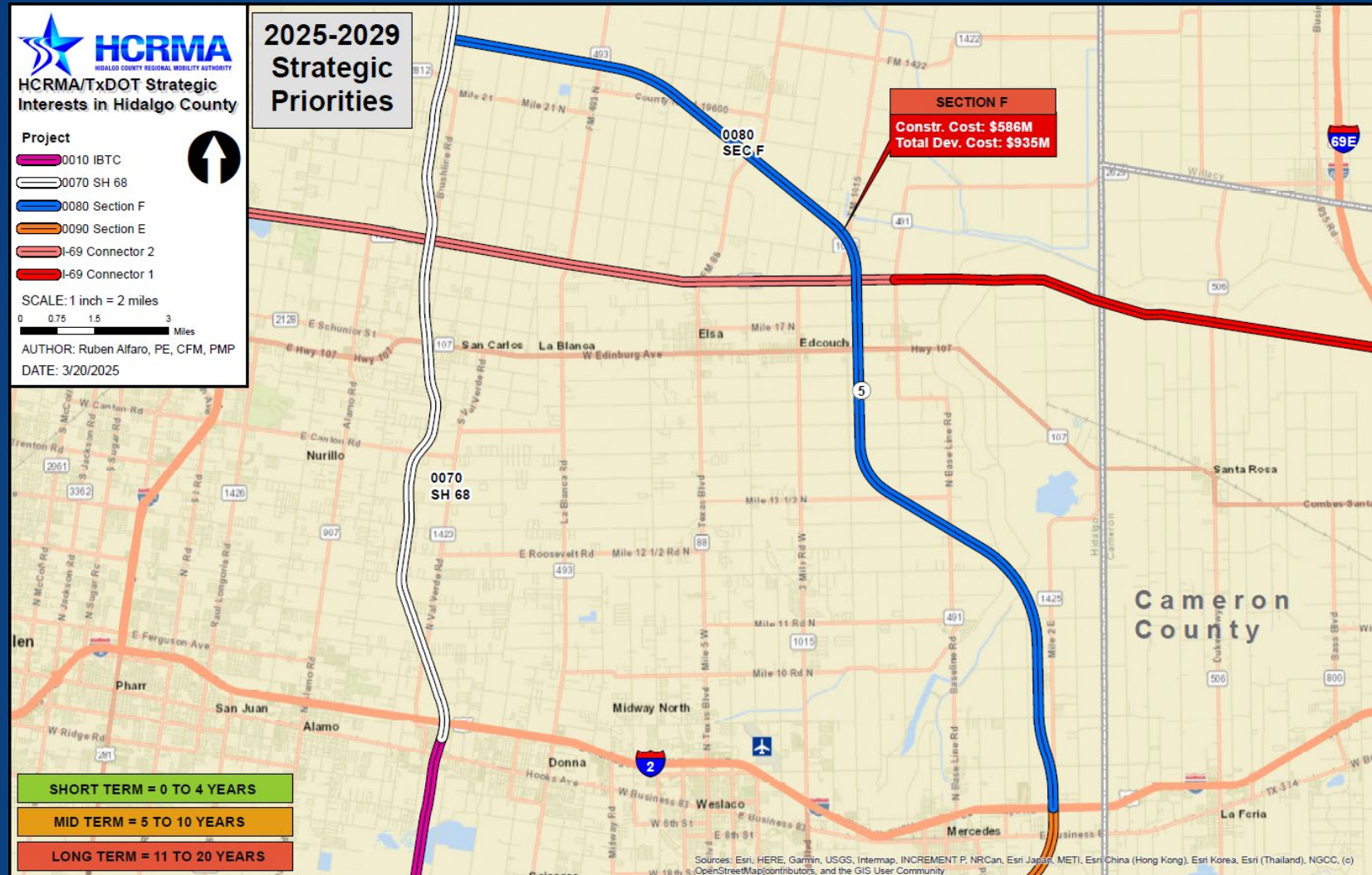
0 0.75 1.5 3 Miles

AUTHOR: Ruben Alfaro, PE, CFM, PMP

DATE: 3/20/2025



# 2025-2029 Strategic Priorities



## SECTION F

# SECTION F

## PROJECT LIMITS:

FROM: I-2, ~1 MILES EAST OF MILE 1 EAST

TO: SH 68, ~0.88 MILES NORTH OF FM 2812

LENGTH: 22.53 MILES

ESTIMATED COST: \$934,100,700.00

PROPOSED LETTING DATE: FY 2037

## NEXT STEPS:

- ▶ EXECUTE ENVIRONMENTAL CLEARANCE CONTRACT AND BEGIN PROCESS
- ▶ DEFINE FINAL ROUTE AS PART OF PROCESS

## CHALLENGES:

- ▶ TO BE DETERMINED BASED ON FINAL ROUTE

## **COST BREAKDOWN:**

MANAGEMENT SUPPORT	\$8,786,700.00
PRELIMINARY ENGINEERING	\$29,289,000.00
FINAL DESIGN	\$41,004,600.00
ROW ACQUISITION	\$163,800,000.00
UTILITY RELOCATION	\$29,289,000.00
CONSTRUCTION	\$615,069,000.00
CONSTRUCTION MANAGEMENT	\$46,862,400.00
TOTAL DEVELOPMENT COST	\$934,100,700.00

## **PROPOSED FUNDING:**

- ▶ TOLL REVENUE BONDS

PRIORITY

5





# HCRMA PRIORITY LIST

PRIORITY	PROJECT	ESTIMATED LETTING YEAR
1	365 TOLL SEGMENT 4	2029
2	365 TOLL SECTION A (WEST)	2033
3	SECTION C	2037
4	SECTION E	2037
5	SECTION F	2039

